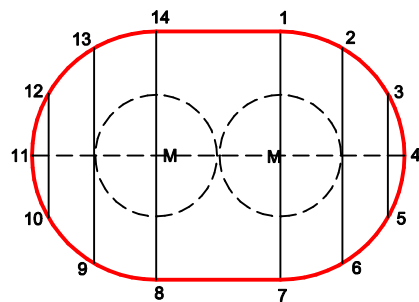
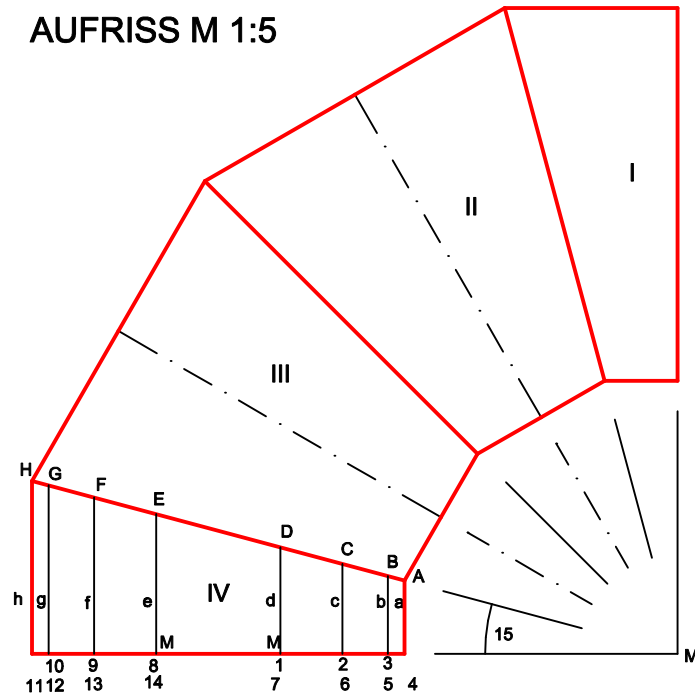


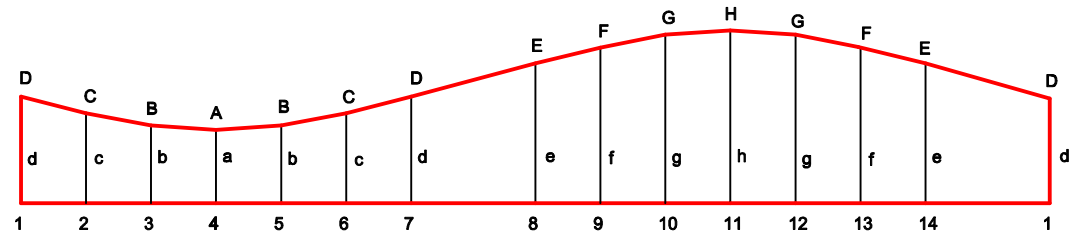
90° - BÜNDELKRÜMMER 2/2 (ROHRE ÜBEREINANDERLIEGEND)

INNERE AUSLADUNG = 27,5cm ; AEUSSERE AUSLADUNG = 65cm ; NAHT SEITLICH ; EINSCHUB 12,5cm

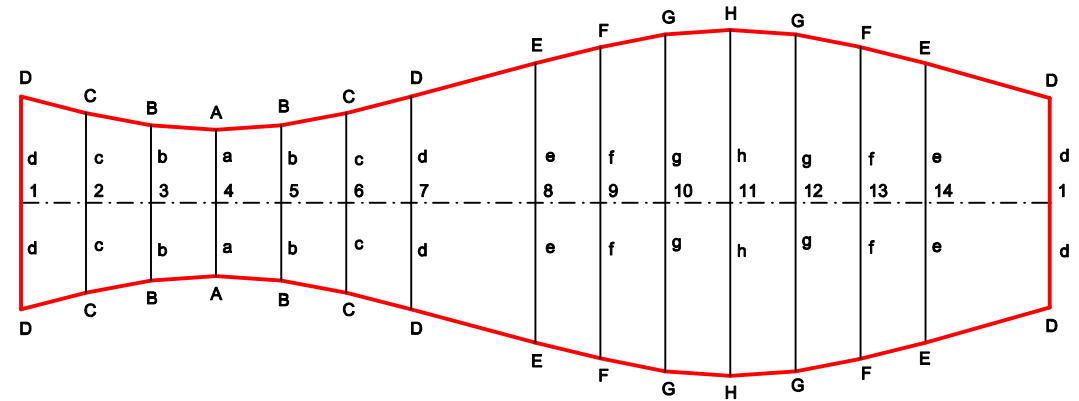
AUFRISS M 1:5



ABWICKLUNG ENDSEGMENT (I,IV) M 1:5



ABWICKLUNG MITTELSEGMENT (II,III) M 1:5



BÜNDELKRÜMMER	M 1:5
GERNOT KULLE	123ISO
DATUM:	NOTE: